

# 2015 ANNUAL CONFERENCE

care • continuity • connection  
GA GAPNA

ARGEC  
Atlanta Regional Geriatric Education Center

SATURDAY  
MARCH 7  
Atlanta, Georgia



## Innovations in Collaborative Geriatric Care

The Historic Academy of Medicine at Georgia Tech  
875 West Peachtree Street NW, Atlanta, GA 30309



Learn More: [GEORGIAGAPNA.ORG](http://GEORGIAGAPNA.ORG)



# Georgia GAPNA Executive Board 2014-2015

**President:** Sheryl McManus, MSN, ANP/GNP-BC

**President-Elect:** Melissa Audy, MSN, ANP/GNP-BC

**Treasurer:** Nikki Davis, MSN, FNP-C, GNP-BC, ACHPN

**Secretary:** Andrew Thornton, DNP, FNP-BC, GNP-BC

## Planning Committee 2014-2015

Stacey Chapman, MSN, ANP-BC

Carolyn K. Clevenger, RN, DNP, AGPCNP-BC, GNP-BC, FAANP

Nikki Davis, MSN, FNP-C, GNP-BC, ACHPN

Rebecca L. Dillard, BS, MA

Katherine A. Evans, DNP, FNP-C, GNP-BC, ACHPN

Sheryl McManus, MSN, ANP/GNP-BC

Alison Schlenger, MSW, MSN, GNP-BC

Melissa Audy, MSN, ANP/GNP-BC

## Continuing Education

To claim your CE certificate, please see the CE Evaluation and Certificate Instructions in your packet.

5.75 hours of CNE have been approved through the American Association of Nurse Practitioners. This program was planned in accordance with AANP CE Standards and Policies and AANP Commercial Support Standards.

5.75 Core Social Worker hours have been approved through the NASW Georgia Chapter.

This program has applied for 5.75 contact hours of continuing medical education from the Accreditation Council for Continuing Medical Education (ACCME) through the Emory Office of Continuing Medical Education.

This program has been pre-approved by The Commission for Case Manager Certification to provide continuing education credit to CCM® board certified case managers. The course is approved for 5.75 CE contact hours.

care • continuity • connection



## President's Welcome

For eight years, the Georgia Chapter of Gerontological Advanced Practice Nurses Association has fostered a community of local practitioners with an interest in geriatric medicine. Today, it is my pleasure, on behalf of the chapter, to welcome you all to our 6th Annual Continuing Education Conference. Every year, this conference is made extraordinary by our attendees. This includes our faithful GAPNA members, phenomenal speakers, and generous exhibitors. I welcome each of you and thank you for being here today.

On behalf of the Chapter, I want to take a moment to specially recognize the Atlanta Regional Geriatric Education Center (ARGEC). This is the fourth year of our highly successful conference partnership. ARGEC is an interdisciplinary, inter-institutional consortium whose mission is to create meaningful educational programming for health professionals and care providers in our region that will improve the quality of practice and ultimately improve quality of life and safety for our senior population. ARGEC's commitment to educational programming has certainly fostered this event. We thank ARGEC for once again facilitating a day of presentations on the leading edge of geriatric practice.

On a more personal note, I want to acknowledge two nurse practitioners who have truly made this day possible. Six years ago, Nikki Davis and Katherine Evans attended a conference in Florida. They came home to Georgia with the idea that nurse practitioners here should have a similar educational opportunity but closer to home. Through their unrelenting devotion to the improvement of practice and the advancement of the profession, that educational opportunity has evolved into this day. What they have accomplished and made possible through their support and collaboration highlights the true value of this day. Sharing knowledge makes us better practitioners and collaboration makes us more influential than we are when simply acting alone.

This continuing education day brings together professionals from many different disciplines. Here today, you will have the opportunity to meet nurse practitioners, registered nurses, social workers, case managers, licensed professional counselors, physicians, vendors of goods and services tailored to the senior population, and others who are part of the care team. One of the strengths of this event is the recognition that we work as part of a team and through collaboration we can improve care. I hope each of you will take home at least one "pearl" to incorporate into your practice and you will make connections to foster new ideas.

Thank you again for being here today. You will make this experience extraordinary.

Sincerely,  
Sheryl N. McManus, ANP/GNP-BC  
President, Georgia GAPNA



Atlanta Regional Geriatric Education Center

## Atlanta Regional Geriatric Education Center

The ARGEC is an interdisciplinary, inter-institutional consortium led by Emory University and includes consortium members Georgia State University, the Morehouse School of Medicine, the University of Georgia and the Atlanta Regional Commission (Area Agency on Aging).

Under its cooperative agreement with the Health Resources and Services Administration, the funding agency for all GEC's, the ARGEC is charged with developing and disseminating curricula in geriatric medicine for inter-professional health providers at all levels of training.

We strive to create meaningful educational programming for health professionals and care providers in our region that will improve the quality of practice and ultimately improve quality of life and safety for our senior population.

## Consortium Leaders

Theodore M. Johnson II, MD, MPH, *Program Director, Emory University*

Kathryn Lawler, MPP, *Atlanta Regional Commission Site Director*

Nancy Kropf, PhD, MSW, *Georgia State University Site Director*

Harry S. Strothers, MD, *Morehouse School of Medicine Site Director*

Toni Miles, MD, PhD, *University of Georgia Site Director*

# Agenda

- 8:00-8:30 AM *Posters, Sign-in & Breakfast*
- 8:30-8:45 AM *Welcome and Conference Opening*  
**Sheryl McManus • Georgia GAPNA President**
- 8:45-10:15 AM *Keynote Speaker*  
**Arthur Garson, Jr., MD, MPH • Grand-Aides Program**
- 10:15-10:45 AM *Break*  
Exhibit Hall Open
- 10:45 AM-12:00 PM *Highlighted Speaker*  
**Ula Hwang, MD, MPH • GEDI: Geriatric Emergency Department Innovations**
- 12:00-1:15 PM *Lunch*  
Product Theatre & Exhibit Hall Open
- 1:15-2:15 PM *Breakout Sessions*  
**Camille P. Vaughan, MD, MS**  
Clinical/Pharm: **EQUIPPED: Enhancing Quality of Prescribing Practices for Older Veterans Discharged from the Emergency Department**  
**Kathy Kinlaw, MDiv**  
Social/Ethics: **Schwartz Rounds: Sharing Vulnerability and the Human Dimension of Medicine**
- 2:15-2:45 PM *Break*  
Exhibit Hall Open
- 2:45-3:45 PM *Breakout Sessions*  
**Eve Byrd, MSN, MPH, APRN-BC**  
Clinical/Pharm: **Updates in Pharmacologic Interventions for Geriatric Psychiatric Patients**  
**Colleen Peach, MSN, CS, FNP-C**  
Social/Clinical: **Updates in Parkinson's Disease**
- 3:45-4:00 PM *Break*  
Exhibit Hall Open
- 4:00-5:00 PM *Closing Speaker*  
**Carolyn Clevenger, DNP**  
**Patient Centered Dementia Medical Home Model**
- 5:00 PM *Conference Close*

Industry Sponsored Product Theater  
Sponsored by Actavis



**Namenda XR**<sup>®</sup>  
(memantine HCl) extended release capsules

NAMENDA XR<sup>®</sup> 28 mg  
A Treatment Option for Moderate to  
Severe Alzheimer's Disease

Georgia GAPNA would like to  
express its appreciation to



**Actavis**

for its continuing support  
in this annual conference.

## Platinum Exhibitor



## Gold Exhibitors



## Silver Exhibitors

Alliant Quality  
Boehringer-Ingelhelm  
Biocodex USA  
Eli Lilly  
GSU-SON  
Instrument House  
Welch Allyn / Health O Meter  
LivHOME  
Matrix  
NAPGCM  
Optum  
Optum Hospice  
Personal Care Inc  
Sanofi-Aventis Pharmaceuticals  
Sunovion Pharmaceuticals  
Vitas Hospice

# Keynote Speaker

Arthur Garson, Jr., MD, MPH

## Grand-Aides

- Describe the role of the home care provider in relation to the nurse practitioner/office-based provider in a Grand-Aide program
- List patient outcomes for health care utilization for patients who receive home care support services
- Identify mechanisms to optimize primary care of acute and chronic illness by leveraging every member of the healthcare team



Arthur Garson, Jr. is the Director of the Health Policy Institute, Texas Medical Center, Houston. Immediately preceding his current position, he was Director of the Center for Health Policy, University Professor and Professor of Public Health Sciences at the University of Virginia. He has previously been the University's Executive Vice President and Provost and prior to that, Dean of the School of Medicine. He has served as the Chief of Pediatric Cardiology, Vice President of Texas Children's Hospital and Dean for Academic Operations at Baylor College of Medicine in Houston, as well as Associate Vice Chancellor for Health Policy at Duke. He is a member of the Institute of Medicine, past President of the American College of Cardiology and Chair of the Agency for Healthcare Research and Quality's National Advisory Council. He is the author of more than 450 publications including 8 books. In addition to work in more than 30 institutions or health plans in the US, he has consulted with health ministers in more than 10 countries on their workforce issues with possible application of Grand-Aides, an innovative health care delivery program with experienced, caring people connecting the patient and care team quickly and cost-effectively.





# Highlighted Speaker

**Ula Hwang, MD, MPH**

## **Geriatric Emergency Department Initiative (GEDI)**



- Define the successful environmental, process and staff attributes of the geriatric emergency department
- Describe the unique needs of the aging population during the time of emergent or urgent care
- Identify patient outcomes affected by the GEDI approach: admission/readmission, care transitions, cost, and patient satisfaction and functional status

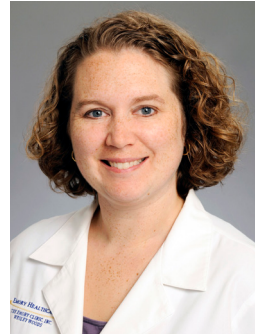
Ula Hwang, MD, MPH, FACEP is an Associate Professor of Emergency Medicine with a secondary appointment in Geriatrics and Palliative Medicine at the Mount Sinai School of Medicine in New York. She is also a core faculty researcher in the GRECC (Geriatrics Research, Education and Clinical Center) at the James J. Peters Bronx VAMC. Her research focuses on understanding and improving the quality of care older adults receive in the ED setting, in particular acute pain care. As such she authored the paper “The Geriatric Emergency Department” that is the basis of the HCIA program, GEDI WISE (Geriatric Emergency Department Innovations in care through Workforce, Informatics, and Structural Enhancements) and was a lead organizer of the nationally endorsed Geriatric ED guidelines. She is a content expert on geriatric emergency care and acute geriatric pain care and is the Past President of the Academy of Geriatric Emergency Medicine of the Society for Academic Emergency Medicine and incoming Chair for the Geriatric Section of the American College of Emergency Physicians. Ula has received funding from the American Geriatrics Society, Hartford Foundation, Atlantic Philanthropies, and New York State Department of Health, and is currently funded by the Veterans Affairs Health Services Research & Development, National Institute on Aging, Centers for Medicare and Medicaid, and Hartford Foundation.



# Breakout Session 1: Clinical/Pharm

Camille Vaughan, MD, MS

## Enhancing Quality of Prescribing Practices for older veterans discharged from the Emergency Department (EQUIPPED)



- List potentially inappropriate medications for older adults, according to the Beers Criteria
- Describe the role of the various providers within the healthcare team in managing emergent conditions common among older adults
- Describe provider response to the structured change in emergency department prescribing processes

Dr. Vaughan is a geriatrician and clinical investigator with a focus on optimizing the care of adults with multiple chronic conditions. She serves as Associate Section Chief for Research within Geriatrics & Gerontology, Assistant Professor at Emory School of Medicine, and as an Investigator in the Birmingham/Atlanta VA Geriatric Research Education and Clinical Center (GRECC). Currently, she is supported by a five-year VA career development award investigating exercise-based behavioral therapy for urinary incontinence in Parkinson's disease. Dr. Vaughan also led the formation of a multi-institutional implementation team (EQUIPPED project) to reduce the use of potentially inappropriate medications prescribed to older veterans discharged from five VA emergency departments.



# Breakout Session 1: Social/Ethics

**Kathy Kinlaw, MDiv**

## **Schwartz Rounds: Sharing Vulnerability and the Human Dimension of Medicine**



- Understand the moral distress experienced among professional caregivers in ethically challenging clinical situations
- Identify models and opportunities that ensure patient-centered care
- Explore the research supporting prognosis discussions and communication strategies that address patient and caregiver emotions

Kathy Kinlaw is Associate Director of the Emory University Center for Ethics and Director of the Center's Program in Health, Science, and Ethics. She is an Assistant Professor of Pediatrics, Emory School of Medicine; and Director of the Healthcare Ethics Consortium.

Since 1994 Kathy has co-directed integration of Clinical Ethics into the School of Medicine's curriculum and enjoys teaching in multiple departments and modules, including residency programs. She led the development of the Master of Arts in Bioethics degree program of the Center for Ethics and the Laney Graduate School and teaches core courses for the program. She currently chairs the Emory University Hospital Ethics Committee and serves on the Committee on Ethics and Professionalism of the Federation of State Medical Boards, and the Advisory Committee for EBICS (Emergent Behaviors of Integrated Cellular Systems). Kathy co-chairs the Ethics/Legal Workgroup for the HRSA-funded, Georgia Department of Public Health HIV Health Information Exchange Challenge Grant. She served as a member of the CDC Ethics Subcommittee of the Advisory Committee to the Director and as a Board member of the Georgia Composite Medical Board for 8 years until Spring 2014. She is actively involved in emergency preparedness scholarship and practice, including work on ethical issues in pandemic planning. Her publications and scholarly interests focus on palliative and end of life care, ethics and medical education, perinatal and neonatal ethics, the work of ethics committees, and public health ethics.



# Breakout Session 2: Clinical/Pharm

Eve Byrd, MSN, MPH, APRN-BC

## Updates in Pharmacologic Interventions for Geriatric Psychiatric patients



- Understand the problems and issues of medication use and management in the elderly with psychiatric diagnoses
- Review pharmacodynamic and pharmacokinetic considerations relevant to the use of psychotropics in the older adult
- Review medication management concerns and controversies in late-life depression

Eve H. Byrd, Executive Director of the Fuqua Center for Late-Life Depression/ Emory University, graduated from the Nell Hodgson Woodruff School of Nursing at Emory University where she earned her Bachelors in Nursing and her Masters in Psychosocial Nursing. She also earned a Masters in Public Health with a concentration in Health Policy from Rollins School of Public Health at Emory. She is a certified Family Nurse Practitioner and a licensed Psychiatric clinical Nurse Specialist and serves as an adjunct faculty member at Emory's School of Nursing. Ms. Byrd is a member of the Board of Directors for the American Association of Geriatric Psychiatry and serves on the annual meeting program and practice committees. She is also on the Board of Directors of Community Friendship, Inc., a psychosocial rehabilitation program in Atlanta. She has served as a consultant to Georgia House Representative Pat Gardner and the Fulton Behavioral Health System of Care Study Committee, Atlanta Regional Commission/Atlanta Area Agency on Aging, Georgia Department of Behavioral Health and Developmental Disabilities, Georgia Division of Aging, the Georgia Alzheimer's Association and a is member of the Georgia Alzheimer's and Related Dementia's State Plan Task Force. She is on faculty with the Carter Center's Mental Health Program/Liberia Project.

In addition to practicing as a nurse practitioner in geriatric psychiatry, Ms. Byrd's area of interest include the translation of evidence based models of care into practice, work force development and mental health policy as it pertains to the care of older adults.



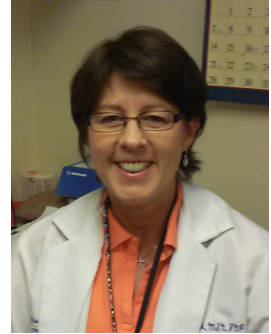


# Breakout Session 2: Social/Clinical

**Colleen Peach, MSN, CS, FNP-C**

## **Updates in Parkinson's Disease**

- Describe the unique chronic and acute care needs of Parkinson's patients
- Describe the role of various providers within the healthcare team in assessing and managing acute and chronic issues for persons with Parkinson's disease
- List the patient outcomes associated with a comprehensive collaborative care approach



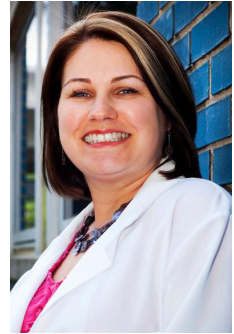
Colleen Peach is a Family Nurse Practitioner at Emory University in the Department of Neurology. She graduated from Kennesaw State University with her Masters of Science in Nursing in 1999. She has worked in the Movement Disorder Section since 2000, treating patients with Parkinson's Disease, Essential Tremor, Dystonia and various other movement disorders. She currently is involved with cutting edge advancements in the use of deep brain stimulation as a treatment for these disorders.



# Highlighted Speakers

**Carolyn Clevenger, RN, DNP, AGPCNP-BC,  
GNP-BC, FAANP**

## **Patient Centered Dementia Medical Home Model**



- Describe the unique needs of persons with dementia and their family caregivers in primary care
- Describe the model of comprehensive, collaborative care for persons with dementia that incorporates psychiatry, palliative care, geriatrics and neurology to achieve best outcomes
- Identify the roles of the clinical team members in providing the appropriate care to persons with dementia and their caregivers

Carolyn Clevenger, RN, DNP, AGPCNP-BC, GNP-BC, FAANP holds a number of leadership positions in nursing education and practices at the Emory Nell Hodgeson Woodruff School of Nursing and its clinical affiliate, the Atlanta VA. In addition to her role as Assistant Dean for MSN education, she is the Director of the Fuld Palliative Care Fellowship program. At the Atlanta VA, she is the Senior Nurse Scholar of the Quality Scholars Advanced Fellowship program and Lead for Student Training of the Atlanta Regional Geriatric Education Center. She is the nurse faculty lead on interprofessional education collaboratives such as the Interprofessional Team Training Day(s) and Emory Senior Mentor program. At the Atlanta VA Medical Center, she is the Associate Program Director of the Atlanta VA Quality Scholars Advanced Fellowship program. She is President –Elect of the Gerontological Advanced Practice Nurses Association (GAPNA), the national organization representing the interests of advanced practice nurses who work with older adults in a wide variety of practice settings.

Dr. Clevenger's commitment to nursing education, practice, and scholarship has garnered national acclaim. In 2013, she was named a Health Care Hero by the Atlanta Business Chronicle. The Gerontological Advanced Practice Nurses Association honored her with its Excellence in Education Award in 2010. She is a recognized as an expert in gerontology and healthy aging. She has served as a clinical expert for media outlets including Fox News, the Atlanta Journal-Constitution, Atlanta Magazine, and the Atlanta Business Chronicle.



# Poster Presentations

## The Perceptions of Non-Palliative Care Hospital Physicians Referring Patients to a Hospital Palliative Care Program

**Author:**

Sharon Jackson White

## Emotions and Alzheimer's Disease: Preliminary Efforts to Develop Emotional Staging for Alzheimer's Disease

**Authors:**

Sean Halpin, Rebecca Dillard, Carolyn Clevenger, Bill Puentes, Roxanna Chicas

## Team Based Performance Improvement Protocol Increased Patient Satisfaction

**Authors:**

Mary D Still, Carolyn Clevenger, Danielle L Moulia, Stephanie L Pieroni, Caroline Peacock, Halley M Locke, David Carpenter, Kevin W. McConnell

## APRN-led Primary Palliative Care in the Medical ICU

**Author:**

Carolyn Clevenger

## Effects of a Nurse-led Primary Palliative Care Bundle on the Specialist Palliative Care Consults in the ICU

**Authors:**

Carolyn Clevenger, Danielle Moulia, Ken Hepburn, Tammie Quest

## Effect of large-scale, low dose interactive training on students' attitudes and knowledge surrounding inter-professional communication and teamwork

**Authors:**

Carolyn Clevenger, Beth Davis



# The Penny Maynard Memorial Scholarship Fund

## Penny Maynard

(December 6, 1962 – February 23, 2014)

Penny Maynard was a nurse practitioner and Director of Clinical Operations with Optum (formerly Evercare). Since the inception of the Georgia Chapter of GAPNA, Penny was an active member. She previously served on the Georgia GAPNA board of directors as Secretary. In her 15 years at Optum, Penny dedicated her career to advancing geriatric care in a variety of roles. She loved her geriatric patients and could always put a smile on their faces.



In 2013, she was diagnosed with cancer, which she succumbed to in 2014, sadly leaving us too soon. Penny's laughter was infectious and would warm the hearts of those around her. She was loved and respected by all of her friends and colleagues. Penny's legacy will live on through all those whose lives she touched. She is survived by her husband Kevin and her three children, Kelli, Kevin and Tyler.

To honor her memory, **The Penny Maynard Memorial Scholarship Fund** was established through Georgia GAPNA. Donations to the fund will be used to provide assistance to an adult/gerontological advanced practice nurse who supports the mission and values of GAPNA.

We are now accepting online donations for the scholarship fund, which will be used to provide assistance to an Adult/Gerontological advanced practice nurse who supports the mission and values of GAPNA. Funds will be used solely for educational purposes, and all donations are tax deductible!

**In addition, during the conference we are raffling items including an iPad. Tickets are \$5 a piece or \$20 for 5. See Allison Schlenger to purchase tickets.**

Please visit [www.georgiagapna.com](http://www.georgiagapna.com) for more details and to donate.