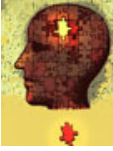


GAPNA eAlert

June 15, 2017



The Importance of Improving Early Diagnosis in Alzheimer Disease

1.25 AMA PRA Category 1 Credits™ | 1.2 ANCC contact hours

Click here for a free CE/CME activity!

This activity is jointly provided by Postgraduate Institute for Medicine and MedEdicus LLC.



Postgraduate Institute for Medicine



In This Issue

REGISTER NOW for our 36th Annual Conference

NEW APRN Specialty Certification

How Diet May Affect Age-Related Macular Degeneration

2017 Pharmacology Conference Sessions in Online Library

Find Your Local GAPNA Chapter

REGISTER NOW for our 36th Annual Conference

Our 36th annual conference will be held in Nashville, TN at the Gaylord Opryland Hotel on October 4 – 7, 2017. Read more below!

[Read More](#)

NEW APRN Specialty Certification

“The purpose of the certification is to better identify APRNs who are most qualified and experienced in managing patient care,” according to GAPNA President Katherine Abraham Evans, DNP, FNP-C, GNP-BC, ACHPN, FAANP. Read more below!

[Read More](#)

1.0 CE/CME CREDIT

PCE

Improve Your Ability to Recognize & Manage Neurogenic Orthostatic Hypotension

[LEARN MORE](#)

Online Library



Get Social

Connect with GAPNA members and other professionals through social media with Facebook, Twitter, and LinkedIn.



Quick Links

- ▶ [GAPNA Home Page](#)
- ▶ [Career Center](#)
- ▶ [Chapters](#)
- ▶ [GAPNA Foundation](#)
- ▶ [Publications](#)

How Diet May Affect Age-Related Macular Degeneration

Switching mice from a high glycemic diet to a low glycemic diet stopped the development of certain signs of age-related macular degeneration. The findings reveal insights into the impact of diet, metabolic changes, and the gut microbiome on macular degeneration. Read more below.

[Read More](#)

2017 Pharmacology Conference Sessions in Online Library

All the sessions from the 2017 Pharmacology Conference in San Francisco are now in the GAPNA Online Library. If you attended the conference, you now have access to the sessions. If you need pharmacology credit, be sure to check out the various packages available.

[Read More](#)

Find Your Local GAPNA Chapter

If you're not already an active part of your local GAPNA chapter, we encourage you to get involved. Belonging to a chapter is a great way to network with colleagues and find support among peers who share your passion for caring for older adults. If there isn't a chapter near you, consider starting one!

[Read More](#)



ENHANCING THE MANAGEMENT of Insomnia in Older Patients

[CLICK HERE FOR A FREE CE/CME activity!](#)



1.0 AMA PRA Category 1 Credit™
1.0 ANCC contact hour
1.0 contact hour of pharmacotherapy credit

This activity is jointly provided by Postgraduate Institute for Medicine and MedEdicus LLC.

You are subscribed to GAPNA's eAlert, a publication for GAPNA members and colleagues. From time-to-time, you will receive an email such as this one with important news and information relevant to gerontological nursing. If you wish to update your email address, please do so by [editing your profile](#) on the GAPNA Website. If you would like to unsubscribe from the GAPNA eAlert, [click here](#).

The Gerontological Advanced Practice Nurses Association (GAPNA) is the organization of choice for advanced practice nurses who want to pursue continuing education in gerontological care and who seek peer support from experienced clinicians.

GAPNA National Office ~ East Holly Avenue Box 56 Pitman, NJ 08071-0056 ~ 866-355-1392 ~ www.gapna.org ~ gapna@ajj.com